



Council for Northeast Historical Archaeology NEWSLETTER

October 2011

NUMBER 80

CONTENTS

RICHARD M. AFFLECK	1
A LETTER FROM THE CHAIRMAN	1
CNEHA Facebook Page	1
UPDATE-- <i>Northeast Historical Archaeology</i>	4
NEWSLETTER EDITOR'S REPORT	4
CURRENT RESEARCH	
Maine	5
Massachusetts	6
Connecticut	7
Maryland	7
Virginia	12
NEW PUBLICATIONS	20
Additions to 2011 Canadian Membership List	21

CNEHA Has a Permanent Address for Its Website:

<http://www.cneha.org/>

COUNCIL FOR NORTHEAST
HISTORICAL ARCHAEOLOGY

Chairman: Karen Metheny

Newsletter Editor: David Starbuck

P.O. Box 492

Chestertown, New York 12817-0492

Tel. & Fax: (518) 494-5583

Email: dstarbuck@Frontiernet.net

Northeast Historical Archaeology seeks manuscripts dealing with historical archaeology in the Northeast region, including field reports, artifact studies, and analytical presentations (e.g., physical anthropology, palynology, faunal analysis, etc.). We also welcome commentary and opinion pieces. To submit a manuscript or request preparation of manuscript guidelines, write to Susan Maguire, Editor, Northeast Historical Archaeology, c/o Anthropology Department, Classroom Bldg B107, Buffalo State College, Buffalo, NY 14222. neha@buffalostate.edu

RICHARD M. AFFLECK

Richard M. Affleck passed away on September 10 after a long illness. Rick was a dedicated professional who loved his work. After serving in the Air Force, he graduated from Cook College of Rutgers University with a bachelor's degree in anthropology and earned a master's degree in archaeology from the University of South Carolina. He worked at Louis Berger & Associates after graduation and had been at URS Corporation in Burlington, N.J., since 1998.

One of Rick's best talents was his ability to "translate" the confusing and at times undecipherable jargon and descriptions used by archaeologists into language that the general public could understand. The finest example was his public outreach report on the archaeological investigations of the King of Prussia Inn. Rick also took special interest in mentoring the next generation of archaeologists, as well as sharing his archaeological knowledge with his colleagues. His great sense of humor and infectious laugh will be missed by all.

There is an on-line guest book at

www.DooleyFuneral.com<<http://www.dooleyfuneral.com/>>

Meta Janowitz and Ed Morin

A LETTER FROM THE CHAIRMAN

Although we will be gathering in Utica in a few short weeks for the annual meeting, I thought it appropriate to provide members with an update in the newsletter on the activities of the Executive Board and the Council. Most of these updates concern events and developments in New York State.

First, over the last few years, CNEHA has increasingly been asked to advocate on behalf of organizations and agencies

CNEHA Facebook Page

CNEHA now has a Facebook page! Search for Council for Northeast Historical Archaeology and "like" the page to see announcements about conferences and other updates.

EXECUTIVE BOARD**2010-2011****CHAIR**

Karen Metheny
 367 Burroughs Rd.
 Boxborough, MA USA 01719
 Home: (978) 263-1753
 E-mail: kbmetheny@aol.com

VICE-CHAIR

Meta Janowitz
 418 Commonwealth Ave.
 Trenton, NJ USA 08629
 Work: (609) 386-5444
 E-mail:
 meta_janowitz@urscorp.com

**EXECUTIVE VICE-CHAIR
(USA)**

Ed Morin
 URS Corporation
 437 High Street
 Burlington, NJ USA 08016
 Work: (609) 386-5444
 E-mail: ed_morin@urscorp.com

**EXECUTIVE VICE-CHAIR
(CANADA)**

Joseph Last
 P.O. Box 1961
 Cornwall, ON
 CANADA, K6H6N7
 Work: (613) 938-5902
 E-mail: joseph.last@sympatico.ca

**TREASURER and
MEMBERSHIP LIST**

Sara Mascia
 P.O. Box 442
 Tarrytown, NY USA 10591
 Cell: (914) 774-4716
 E-mail: sasamascia@aol.com

SECRETARY

Ellen Blauberger
 2 Petherwin Place, RR1
 Hawkestone, ON
 CANADA, L0L 1T0
 Home: (705) 326-2071
 E-mail: eblauberger@rogers.com

NEWSLETTER EDITOR

David Starbuck
 P.O. Box 492
 Chestertown, NY USA 12817
 Home: (518) 494-5583
 Cell: (518) 791-0640
 E-mail: dstarbuck@frontiernet.net

**JOURNAL and MONOGRAPH
EDITOR**

Susan Maguire
 Buffalo State College CLAS B107
 1300 Elmwood Avenue
 Buffalo, NY USA 14222
 Work: (716) 878-6599
 Fax: (716) 878-5039
 E-mail: maguirse@buffalostate.edu

AT LARGE BOARD MEMBERS

Allison Bain
 CELAT, Pavillon De Koninck
 1030, avenue des Sciences-humaines
 Université Laval
 Québec (Québec)
 CANADA, G1V 0A6
 Work: (418) 656-2131 ext. 14589
 Fax: (418) 656-5727
 E-mail: Allison.Bain@hst.ulaval.ca

Christa Beranek
 54 Walker St., Apt. 2
 Somerville, MA 02144
 Work: Somerville, MA 02144
 Work: (617) 287-6859
 Fax: (617) 264-6040
 E-mail: christa.beranek@umb.edu

Nancy J. Brighton
 24 Maplewood Drive
 Parsippany, NJ USA 07054
 Work: (917) 790-8703
 Fax: (212) 264-6040
 E-mail:
 nancy.j.brighton@usace.army.mil

James Delle
 Dept. of Anthropology
 Kutztown University
 Kutztown, PA USA 19530
 Work: (610) 683-4243
 E-mail: delle@kutztown.edu

Silas Hurry
 HSMC P.O. Box 39
 St. Mary's City, MD 20686
 Work: (240) 895-4973
 Fax: (240) 895-4968
 E-mail: sdhurry@smcm.edu

Craig Lukezic
 Delaware Division of Historical and
 Cultural Affairs
 21 The Green
 Dover, DE 19901
 Work: (302) 736-7407
 E-mail: craig.lukezic@state.de.us

Patricia Samford
 Director, Maryland Archaeological
 Conservation Laboratory
 Jefferson Patterson Park & Museum
 10515 Mackall Road
 St. Leonard, MD 20685
 Work: (410) 586-8551
 Fax: (410) 586-3643
 E-mail: PSamford@mdp.state.md.us

Richard Veit
 Dept. of History and Anthropology
 Monmouth University
 West Long Branch, NJ USA 07764
 Work: (732) 263-5699
 E-mail: rveit@monmouth.edu

charged with the protection and preservation of archaeological resources. As you know, continued budget shortfalls have forced state and provincial governments to confront issues concerning the allocation of resources and how to meet their legislated responsibilities. As is often the case, services and programs that are seen as non-essential or “soft” are the targets of proposed budget cuts. This summer, the State of New York moved to terminate the State Archaeologist/Director of the Cultural Resource Survey Program, the Curator of Archaeology, and the Curator of Historical Archaeology. Our concern is obvious—the proposed cuts would undermine the legislated function of the State Museum to the extent that it would no longer be able to adequately serve its role as the permitting and oversight authority for mandated archaeological survey within the State; neither would the Museum be able to perform its role as an educational resource for the citizens of New York State, or its role as the major repository for the State’s archaeological collections. It is also our feeling that the elimination of these key positions places the State’s historical and archaeological sites and resources in peril by limiting the Museum’s role as steward and manager, and, further, that such a measure will negatively impact the heritage tourism industry that is so important to the State’s economy.

CNEHA added its voice to those of other professional and non-profit organizations who oppose the proposed cuts. In July, I sent a letter on behalf of the Council to the Governor of the State of New York and the State Board of Regents urging them to reconsider. This matter is of special concern to us because the Council was founded in New York State in 1966. CNEHA was founded by professional and avocational archaeologists and historians who were alarmed by the destruction and loss of historical and archaeological resources in the region. The Council grew out of their awareness of the need to preserve and protect the historical archaeological record and to share that past with others. The Council holds its charter from the State of New York, and our relationship with the State has continued for over forty years. We feel this makes the Council a strong stakeholder in the State’s historical, archaeological, and educational programs. As of this writing, the cuts, though temporarily suspended, are still a possibility.

On a happier note, CNEHA wrote a recommendation on behalf of the Historical Society Serving Sleepy Hollow and Tarrytown, New York, in its application for an NEH grant. The grant would allow the Society to archive and curate the Requa Archaeological Collection, and to make that collection accessible to online researchers. The Requa Archaeological Collection is of great importance to scholars from a number of disciplines. The assemblage includes material culture from and archaeological documentation for the only intact archaeological example of a tenant site from New York’s Manorial period (1664-1775). For archaeologists, historians, and material culture specialists, this collection of ceramics, glass, metal tools, small finds, and organic materials, including food remains, from the 18th-19th centuries has great significance

because of the sheer size of the collection and the inclusion of a broad range of materials representing an extensive period of colonial history. The collection also holds many diagnostic examples, with significance for understanding local manufactures, such as pottery, as well as the extent of local and trans-Atlantic trade networks. The site holds vital information related to the experience of tenant farming during this period, including key evidence concerning subsistence practices, foodways, and daily life. The site also contains valuable information on the different cultural and ethnic influences present in early New York, including Dutch, French Huguenot, and English, and will add significantly to the study of comparative colonialism in North America. Given the recent work focused on a Dutch provisioning plantation on Shelter Island, New York, the material from the Requa site becomes even more significant, and its accessibility and analysis are critical. Until this assemblage is fully inventoried, organized, and stabilized, the materials are subject to decay and loss. This collection needs to be brought together from its different storage locations and display areas, inventoried, and curated to ensure its continued availability and long-term survival for scholarly study. The Executive Board felt support of this initiative was consistent with many of our objectives as an organization, including the promotion of scholarly research, collections management, and public outreach.

Given the events in New York State, it seems fitting that this year’s conference is taking place in Utica. Co-organizers Tom Crist and Helen Blouet have chosen to highlight New York State archaeology, and the theme of this year’s conference is *Connecting People and Places: New York State as a Crossroads in American History*. The plenary session on Friday features archaeologists and scholars from across the state, including Douglas Armstrong (Syracuse University), Jan DeAmicis (Utica College), Brian Howard (Oneida County Historical Society), Ann-Eliza Lewis (Columbia County Historical Society), and Anthony Wonderley (Oneida Community Mansion House). Posters and more than a dozen papers will feature archaeological work in New York State, including the recently excavated 18th-century ship at the World Trade Center site. Tours will highlight New York State historical sites and include trips to Fort Stanwix, to the Oneida Community Mansion House and Shako:Wi, the Oneida Indian Cultural Center, and to Cooperstown. Finally, this theme will carry over into the bookroom, where we will feature publications related to New York State archaeology and promote the activities and publications of a variety of state and local associations that are dedicated to the protection, preservation, and study of archaeological and historical resources in the northeastern United States and Canada. The Utica conference also coincides with the first-ever National Archaeology Day (October 22), sponsored by the Archaeological Institute of America. CNEHA is a sponsoring organization, and we will be highlighting this event in the bookroom.

I am also pleased to announce CNEHA's first professional enrichment workshop at the Utica conference. The subcommittee on Educational Initiatives has proposed this series for the purpose of providing members and conference attendees with structured workshops that, through hands-on participation, case studies, and discussion, will serve to enhance their professional skills; this is not a certification program but rather may be seen as an opportunity for continuing education. While this year's offering may be considered a trial run, we are hopeful that it will be the first of many such workshops. Possible topics for future workshops include material culture identification (glass, ceramics, metals, small finds, tobacco pipes), conservation and curation, artifact storage, document storage, faunal identification, the identification of human remains, National Register updates, workshops in the completion of nomination forms or Historic Structures reports, GIS, drafting, soils analysis or geophysical techniques, and oral history techniques.

The topic of this year's workshop is Practical Aspects of Bioarchaeology Fieldwork and Laboratory Analysis. The workshop will run for five hours and will be led by Dr. Tom Crist of Utica College and Kimberly Morrel of URS Corporation. The purpose of this workshop is to introduce participants to the practical aspects of detecting, excavating, storing, and analyzing human remains from historic-period graves using historical coffins, hardware, and actual human remains. Among the topics that will be covered are the most effective methods for locating historical graves; correct field techniques and in situ documentation; the effects of taphonomic processes; appropriate health and safety issues; and fostering descendant community involvement and public outreach efforts. Participants also will review the basic analytical techniques that forensic anthropologists use to determine demographic profiles and recognize pathologic lesions and evidence of trauma. We are very excited to offer this first professional enrichment workshop, and we look forward to receiving your comments on the proposed series.

Given the events of the past year, it is clear that CNEHA will increasingly be asked to serve an advocacy role in support of its stated goals—to stimulate and encourage the collection, preservation, advancement, and dissemination of knowledge gained through the study and practice of historical archaeology, particularly through fieldwork, collections research, conservation, education, and public outreach. Your comments on any of the issues I have raised here are welcome.

Finally, I would like to acknowledge the loss of long-time member Richard Affleck, who passed away on September 10th of this year. Richard was a dedicated advocate for New Jersey archaeology and education. He will be greatly missed by his colleagues and friends, and by the CNEHA community.

Karen Metheny
Chair, Council for Northeast Historical Archaeology

UPDATE--*Northeast Historical Archaeology*

Reported by: Susan Maguire, Editor

Greetings from Buffalo. We have had a busy summer digitizing the past journal content and preparing word-searchable .pdf files for all back issues of the journal. Volumes 36 and 37 are now available electronically at <http://digitalcommons.buffalostate.edu/neh/>. Additionally new manuscripts may be submitted at this address. See the "Submit Article" link on the right-hand side of the page for more details. Let me know if you have any comments or suggestions. Volume 38 is behind schedule but is currently in layout and should be in your mailboxes by November. Volume 39 is well under way and should arrive in Spring 2012. I hope to see you all in Utica.

Newsletter Editor's Report

Reported by: David Starbuck, Newsletter Editor

Please send news for the March issue of the CNEHA Newsletter by January 15 to the appropriate provincial or state editor.

Provincial Editors:

ATLANTIC CANADA: Amanda Crompton, Dept. of Archaeology, Memorial University of Newfoundland, St. John's, Newfoundland A1C 5S7. ajcrompton@mun.ca

ONTARIO: Suzanne Plousos, Parks Canada, 111 Water St. E, Cornwall, ON K6H 6S3. suzanne.plousos@pc.gc.ca

QUEBEC: Robert Gauvin, Conseiller principal / Services archéologiques, Parcs Canada, 3, passage du Chien d'Or, C.P. 6060, Haute-Ville, Quebec, G1R 4V7. Robert.gauvin@pc.gc.ca

State Editors:

CONNECTICUT: Cece Saunders, Historical Perspectives, P.O. Box 3037, Westport, CT 06880-9998. HPIX2@aol.com

DELAWARE: Lu Ann De Cunzo, Dept. of Anthropology, University of Delaware, Newark, DEL 19716. decunzo@udel.edu

MAINE: Leon Cranmer, 9 Hemlock Lane, Somerville, ME 04348. lcranmer7@gmail.com

MARYLAND: Silas D. Hurry, Research and Collections, Historic St. Mary's City, P.O. Box 39, St. Mary's City, MD 20686. sdhurry@smcm.edu

MASSACHUSETTS: Linda M. Ziegenbein, Anthropology Department, University of Massachusetts, 215 Machmer Hall, Amherst, MA 01003. lziegenb@anthro.umass.edu

NEW HAMPSHIRE: Dennis E. Howe, 22 Union St., Concord, NH 03301. earlyhow@myfairpoint.net

NEW JERSEY: Lynn Rakos, US Army Corps of Engineers, CENAN-PL-EA, 26 Federal Plaza, New York, NY 10278. Lynn.Rakos@usace.army.mil

NEW YORK CITY: Nancy J. Brighton, US Army Corps of Engineers, CENAN-PL-EA, 26 Federal Plaza, New York, NY 10278. Nancy.J.Brighton@usace.army.mil

NEW YORK STATE: Lois Huey, New York State Bureau of Historic Sites, Peebles Island, Waterford, NY 12188. lmfh@aol.com

PENNSYLVANIA: Wade Catts, John Milner Associates, 535 North Church Street, West Chester, PA 19380. wcatts@john-milnerassociates.com

RHODE ISLAND: Kristen Heitert and Ray Pasquariello, The Public Archaeology Laboratory Inc., 210 Lonsdale Ave., Pawtucket, RI 02860. kheitert@palinc.com

VERMONT: Elise Manning-Sterling, 102 River Rd., Putney, VT 05346. emanning@hartgen.com

VIRGINIA: David A. Brown, 2393 Jacqueline Drive, Apt. 504c, Hayes, VA 23072. dabro3@wm.edu

WEST VIRGINIA: David E. Rotenizer, Site Manager, Grave Creek Mound Archaeological Complex, West Virginia Division of Culture and History, 801 Jefferson Avenue, P.O. Box 527, Moundsville, WV 26041. David.E.Rotenizer@wv.gov

CURRENT RESEARCH

Maine

Reported by: Leon Cranmer

Popham Colony

by Jeffrey P. Brain

We returned to Fort St. George when a portion of the site that we had never been able to explore was sold and the new owner invited us to excavate. Our excavations provided further evidence of the reliability of John Hunt and his map. According to Hunt, the smithy was located there, as well as residences and the bakery. We did indeed find residential features and artifacts at one location and evidence of ironworking exactly where Hunt had placed the smithy. Rather than the forge, which remains to be discovered, we found the remains of bloomeries where the colonists had smelted iron ore. This adds a whole new dimension to the colony. The motivations, planning and competence of the colonists are diversified and substantiated. A blacksmith shop was expected as it provided

an essential service for the maintenance of a military garrison and the construction of a ship. But that they also came prepared to smelt iron is a revelation. In addition to the necessary craftsmen – a smelter, and charcoal burners, as well as a smith – there was the obvious intent to exploit another natural resource and demonstrate self-sufficiency in developing a complete ironworking industry. Thus we have further evidence of the firm intentions and determination of the colonists as they strove to establish a viable plantation in the north. They intended to stay and exploit all available natural resources in order to become as self-sustaining as practicable.



Shipwreck in Seal Cove

by Franklin H. Price

An historic wooden shipwreck in Seal Cove, Maine, was the subject of a short survey and investigation in early August. The week-long project was funded by the Submerged Resources Center of the National Park Service and the Institute of Maritime History. It involved Acadia National Park staff and members of the public in a maritime archaeology project, focusing on recording an historic vessel in the intertidal zone. Since the site is out of the water approximately half of the time, participants were able to experience nautical archaeology without having to dive.

The site is on the western side of Mount Desert Island, Maine, on Town of Tremont land under an Acadia National Park easement. The interior of the cove, where the vessel now rests, was an early location of settlement on the island, centering upon a saw mill that first appears on maps in 1794. The area was also the site of a fish weir and a road. In addition, historic photographs show small boats, likely used in the fishing trade. The waters around the wreck still provide excellent shelter in all manner of weather. Even today, fishing boats are occasionally careened in the same part of the harbor.

Over a dozen volunteers assisted archaeologists in recording site features. They were assigned various tasks, from site recording to photography. This gave some people their first



experience in archaeology of any kind, and almost all their first experience with maritime archaeology. With volunteer assistance, investigators created a complete site plan, and the profiles of selected frames. They also acquired molded and sided (height and width) dimensions of all of the frames, the diameters of wooden fasteners, and various other measurements. Tidal fluctuations provided a short window in which to work, but by week's end all of the project objectives were met.

The name of the vessel at Seal Cove will likely remain a mystery. The local lore suggests that it was a stone barge. Although a definitive identification is unlikely, some observations can be made about the vessel. The remaining continuous wooden structure consists of frames, outer hull planking, and the keel. These elements are held together predominantly with wooden pegs, called treenails. With only structure to the turn of the bilge, researchers do not have much to go on. Many discoveries likely lay ahead. When checked against boatbuilding treatises and insurance specifications, the measurements recorded by archaeologists and volunteers will help to provide a rough idea of the original size of the vessel. Further examination of the relationships between individual elements may also answer questions surrounding vessel construction.

Massachusetts

Reported by: Linda M. Ziegenbein

[Submitted by Alexander Keim, Boston University]

3rd Annual Wakefield Summer

Archaeological Institute, Milton

This June and July the Wakefield Summer Archaeological Institute undertook a third season of excavation at the Wakefield Estate in Milton, Massachusetts. Sponsored by the Mary B. Wakefield Charitable Trust, this ongoing program provides an opportunity for high school students from the Boston area and around the country to learn the fundamentals of archaeological investigation and gain hands-on excavation

experience. The mission of the Trust is to use the land and resources of the 34-acre estate to encourage life-long participatory learning through community outreach and education. In addition to multiple extant 18th and 19th century buildings, the rich archaeological record contains information about over 300 years of continuous occupation. Previous research goals of the Institute have included ground-truthing, a 2008 ground penetrating radar survey, and investigating the alteration of the Estate's historic stone walls.

This season's excavation was focused on locating and assessing the condition of any archaeological or depositional remains related to the construction, use, and demolition of a two-story wooden carriage barn that stood near the estate's 1794 Georgian mansion house during the first half of the 19th century. The former location of this structure is indicated by several historical maps and photographs of the Wakefield Estate. Over two two-week sessions, and under the direction of Boston University PhD candidates Jenny Wildt, Sara Belkin and Alexander Keim, students at the Institute learned about archaeological theory, methods and ethics. The students also conducted a shovel test survey designed to locate architectural or depositional features related to the carriage barn. The results of the excavation indicate that the area indicated by the documentary sources as the likely location for the barn was used extensively during the first half of the 19th century. While architectural features related to the barn were not located, excavation in this area is ongoing.

The ongoing and generous support of the Wakefield Charitable Trust has resulted in a program that has produced quality research and has received very positive feedback from students and parents. Anyone interested in learning more about this unique experience is encouraged to contact Wakefield Estate Program Director Mark Smith at mark@dogwoodlanefarm.org.

71-73 Joy Street, Boston

Over three days in the fall of 2010, and again on September 9-10 of this year, a team of volunteer archaeologists conducted exploratory salvage excavations in the rear courtyard of 71-73 Joy St., located in the Beacon Hill neighborhood of Boston, Massachusetts. The property is located down the street from Boston's historic African Meeting House, in the part of Beacon Hill that was home to Boston's free African-American community during the 19th century. 71-73 Joy St. was first explored archaeologically in 2006 by a team lead by Dr. Mary C. Beaudry, professor of Archaeology at Boston University, and Ellen Berkland, at the time the Boston City Archaeologist and now an archaeologist working for the Massachusetts DCR. The 2006 excavations were conducted prior to an extensive remodeling and foundation repair to a 19th-century ell attached to the rear of the structure, and uncovered archaeological deposits including a 19th-century privy feature.

Aware of the historical importance and archaeological potential of their property, the owners of 71-73 Joy Street contacted Dr. Beaudry in 2010 and 2011 to ensure that archaeological testing was conducted in the courtyard prior to extensive construction-related excavations. In the fall of 2010 the team of Travis Parno, Jade Luiz, Eliza Wallace, Jeff Cheng, and Alexander Keim, all PhD candidates in Archaeology at Boston University, excavated two test units in the courtyard and recovered a series of occupation and fill contexts beginning in the 20th century and stretching back to the early 19th century. At a depth of approximately 2 meters below surface, excavators encountered preserved, waterlogged plank flooring. Historical research on the property indicates that it was once part of an extensive 18th-century distillery complex that was demolished in the early 19th century. It is possible that this flooring was originally part of the distillery complex. The 2011 excavations were conducted by Sara Belkin and Alexander Keim, PhD candidates at Boston University, and Danielle Cathcart and Nikki Marie, enrolled in the MA program in Historical Archaeology at UMASS Boston. This excavation consisted of one test unit located in a different area of the courtyard, and uncovered more 19th-century contexts before terminating at sterile marine clay sub-soil at approximately 80 cm below surface. All the materials from the 2006, 2010, and 2011 excavations are currently being analyzed by Danielle Cathcart as part of her Master's thesis.

Connecticut

Reported by: Cece Saunders

NEHFES

The New England Hebrew Farmers of the Emanuel Society (NEHFES) Synagogue and Creamery Site, measuring 1.77 acres, is in the Village of Chesterfield, Town of Montville, in Eastern Connecticut's New London County. This land was purchased in 1892 by the Society Agudas Achim (founded in 1890) and the NEHFES, its successor organization. With the financial assistance of the Baron de Hirsch Fund, the recently arrived Jewish farmers and residents of the Chesterfield community constructed a synagogue and creamery on the property. By the 1910s, the women of the congregation had raised funds to construct a *mikvah*, or ritual bathhouse, on the property, which was located in the basement of a small building whose upper floors at times also housed a ritual butcher hired by the community. Other features on the site include stone wells, a barn foundation, and retaining walls. The Chesterfield community continued to hold periodic services in the synagogue until 1953. The Creamery, built in 1892, operated only until 1909 and was foreclosed upon in 1912 by the Baron de Hirsch Fund. It was sold several years later, and remained a functioning inn and residence until it burned in 1950.

NEHFES has been reactivated as a 501 (c)(3) not for profit corporation by descendants of the founding families.

Members of the organization have been active in preserving and commemorating the historic site. In 1986, a commemorative monument was dedicated next to the synagogue foundation remains. The NEHFES site has been listed on the State Register of Historic Places. The NEHFES was declared a State Archaeological Preserve (Preserve) in 2007, a program established by the Connecticut Legislature as a mechanism to protect significant archaeological sites.

The significance of the NEHFES site reaches beyond the local and state level, reflecting national immigration patterns, demonstrating the vibrancy of community evolution, and representing the impact of the Baron Maurice de Hirsch Fund program. Archaeological investigations of the Synagogue/Mikvah parcel, designed to address the archaeological potential of the site and to provide contextual data for a National Register nomination, were completed by Historical Perspectives Inc. (HPI) in June 2011. The field testing, under the direction of Faline Schneiderman-Fox, revealed the presence of artifacts related to use of the buildings during the time they were active, as well as materials that appeared to date to the demolition of the structures.

The National Register of Historic Places nomination, prepared by Julie Abell Horn and Faline Schneiderman-Fox of HPI, concluded that the NEHFES Synagogue and Creamery Site is significant for both its historical and archaeological value, under Criteria A and D, respectively. It is a religious site, containing the remains of a synagogue and mikvah built and used by an Orthodox Jewish congregation. The families that established themselves in Chesterfield were recent Russian immigrant pioneers, who created an insular ethnic enclave based on the model of the shtetl they had experienced in Eastern Europe, with cooperative associations and interdependence on fellow residents as a strong focus of their heritage. The creamery that was built to spur local industry was a prime example of this type of community template. Today, the buildings and structures on the site exist only as archaeological remains, which provide an additional level of significance for this already historic site. The National Register nomination is currently under agency review.

Maryland

Reported by: Silas D. Hurry

St. Mary's City

From June 1 – August 7, 2011, Historic St. Mary's City conducted its annual field school at the site of the Calvert House in St. Mary's City. Leonard Calvert, the first Governor of Maryland, built the house in the late 1630s or early 1640s. The structure served as the first statehouse of Maryland and was the largest Ordinary in town. For the past three years, the HSMC field school has explored the yards around the building to define changes in use of the space and to discover out-buildings and other features. This summer's work was

focused on three goals: further define the fence layout, continue to explore the north wall of the 1645 Pope's Fort, and to define the east side of a filled-in ravine which led to the fresh water spring.

Over the past three years, considerable information has been collected about how fences were used to define space at the Calvert House. While later periods are well defined, the earliest fences remained elusive. A goal of this summer was to follow the early, pre-1645 fences which curve around the backyard. Following a fence line that is not strictly linear presents some challenges but the field school was able to trace one of the early fences and begin the definition of another one.

The investigation of Pope's Fort began in the 1980s when it was first located. Consisting of a ditch and palisade, the fort was built by rebels against Lord Baltimore's government as part of the English Civil War. Three years ago, the field school uncovered a portion of the north wall. They found the ditch to be very shallow and discovered the palisade was not present. Instead of the expected line of stakes, a series of four post holes was noted. This summer, the field school extended the investigation of this area another 20 ft. to the west. Again, there was no palisade but four more post holes were found in its place. It appeared that the defenses on this side of the fort were more robust than on the other sides, probably because it faced the most likely avenue of approach by a land force.

Last summer, in following fence lines along the southwestern boundary of the site, excavation revealed a filled-in ravine. In the 17th century, this ravine led down to the closest fresh water source. It was filled with rubbish from the entire period of the house's occupation and was heavily disturbed by rodent activity. During this season's work, the field school defined the east side of the ravine. The ravine is approximately 25 feet wide. The fill within the ravine was full of bone, shell and a rich assemblage of early artifacts. An account of the excavations can be found on the Historic St. Mary's City website under the title, "Dispatch from Field School."

Annapolis

The Archaeology in Annapolis program, under the direction of Mark Leone, completed summer archaeological Field School excavations in June of 2011 in the Historic District of Annapolis, at the James Holliday House and at 49 Pinkney Street. This was the second season of excavation at the James Holliday House, a brick townhome just off of State Circle where James Holliday and his descendant family have lived since 1850. Holliday was born a slave in 1809 and freed in 1819, and by 1845 had become one of the first African Americans to work at the U.S. Naval Academy. Holliday worked at the USNA for almost 40 years and served as a courier to the first eight superintendents of the Naval Academy. The deep, intact stratigraphy has led to the recov-

ery of tens of thousands of artifacts from this rich archaeological site. Based on the materials recovered and the analyses conducted between the first and second season of excavations, researchers determined that the Holliday family and their descendants adopted a middle class lifestyle while maintaining a uniquely African American identity at the same time. The Holliday family appears to be conforming to the Victorian conventions of purchasing stylish, up-to-date dishes, but not in the matching sets that were marketed to White consumers, and instead consciously chose to only purchase a few pieces at a time, a trend common among African Americans in Annapolis.

In order to extend the intellectual work being done at the James Holliday House, excavations were also conducted this summer on Pinkney Street, a site that consisted of two 19th-century rowhouses, (which have since been converted into a single family home) that were occupied by African American, Filipino and White renters, many of whom had ties to the U.S. Naval Academy. The original lot was purchased in 1867 by William H. Butler, one of the wealthiest African Americans in Annapolis during the mid-to- late 19th century, who owned and rented several properties throughout the city. Late 19th-century insurance maps describe the property on Pinkney Street as a tenement house, and between the late 19th- and early 20th- century occupants included African American laundresses and servants, White U.S. Naval Academy employees, and Filipino waiters in the U.S. Navy. Through this site, researchers from the University of Maryland are hoping to determine how the site was used, how its uses changed over time, if these changing uses reflect its different occupants' identities, and how this site compares to the James Holliday House.

The artifacts recovered from the excavations at the James Holliday House and from 49 Pinkney Street are currently being processed and cataloged in the Archaeology in Annapolis Laboratory in College Park, MD. The data from these excavations will be written up by Kathryn Deeley for her dissertation at the University of Maryland, College Park, Department of Anthropology. The summer excavations also received press coverage through the *Washington Post* (http://www.washingtonpost.com/local/u-md-archaeologists-in-annapolis-use-a-trowel-to-understand-the-past/2011/06/15/AGdeIfXH_story.html) and the *Baltimore Sun* (<http://www.baltimoresun.com/news/maryland/anne-arundel/bs-md-ar-annapolis-archeological-dig-20110616,0,1263222.story>). The summer excavations were also covered in an online blog (<http://blog.umd.edu/aia>), maintained by Beth Pruitt, a doctoral student in the Department of Anthropology at the University of Maryland, College Park. The blog is continually updating, and will be covering the analyses of the materials recovered from this summer's field school throughout the academic year.

For more information, contact Kathryn Deeley (kdeeley@umd.edu), Beth Pruitt (epruitt@umd.edu), and/or Benjamin Skolnik (bskolnik@umd.edu)

Bladensburg

During the 2011 field season, SHA archeologists and Dr. Ruth Troccoli of the DC Historic Preservation Office continued exploration of the Bladensburg Battlefield, assisted by personnel from BRAVO, the Battlefield Restoration and Archaeological Volunteer Organization. The project is funded by the National Park Service (NPS) American Battlefield Protection Program (ABPP). The investigations recovered additional artifacts from the hilltop where Beall's county militia and Miller's flotillamen and marines were positioned. BRAVO volunteers found several musket balls and what is believed to be a flint wrap – a piece of sheet lead that would have been used to secure the flint for a flintlock musket.

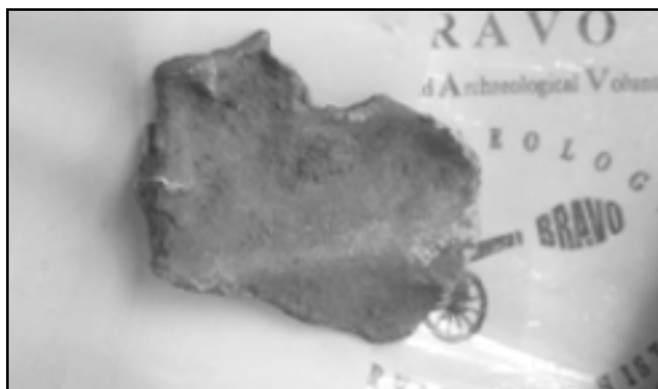


BRAVO in action



BRAVO Metal detecting Team

We also found several Minié balls, artifacts relating to troops stationed at Fort Lincoln between 1862 and 1865. In addition, we recovered a horseshoe, a spout that may have been part of a coffee kettle, and hardware that may relate to the Civil War encampments or agricultural use of the area.



Lead Object, Possible Flint Wrap

YAP films is producing a documentary on the War of 1812 from the Canadian perspective. Film crews shot footage of the ongoing work at Bladensburg as part of their documentary.

While in the field, we visited ongoing excavations being directed by Smithsonian Institute archeologist Dr. Noel Broadbent. Noel has uncovered the foundation of an outbuilding on the mid-nineteenth century Rives property. The find is important because Barney's 18-pounder cannon are said to have been set up in close proximity to Rives' barn. Civil War maps allow and Noel's find allow us to accurately place Barney's position on the battlefield. It is also important because NPS owns the small parcel where the outbuilding was identified, possibly providing a starting point for public interpretation of this significant battlefield. Noel has also identified the location of Barney's Spring, a subject of debate among historians for some time.

SHA has received a second grant from the ABPP, which will fund a National Register nomination and a short-term management plan for NPS.

Patuxent River

During 2011 the Institute of Maritime History assisted in underwater reconnaissance and site assessment in Maryland searching for the War of 1812 Patuxent River flotilla. IMH members assisted the Maryland Historical Trust and Naval History and Heritage Command in assessment of a vessel or vessels from a flotilla commanded by Joshua Barney that was scuttled in the Patuxent River in 1814 in connection with the British attack on Washington DC. (see below)

For more information visit www.maritimehistory.org or email david.howe@maritimehistory.org.

Patuxent River – A neoprene-clad diver slipped into the

murky water of the Patuxent River near Upper Marlboro Wednesday to examine the wreck of a 19th-century ship that archaeologists and state officials hope to make a star attraction in Maryland's commemoration of the bicentennial of the War of 1812.

The sailing ship could be the *USS Scorpion*, part of a fleet known as the Chesapeake Flotilla that was designed to navigate the shallow waters of the Patuxent and harass the British, whose Royal Navy at the time was terrorizing towns from Havre de Grace to Norfolk.

The excavation is part of Maryland's effort to create a tourism cash cow from the bicentennial of a war whose biggest claim to fame is inspiring "The Star-Spangled Banner." Based in part on Virginia's experience with revenue generated by Civil War sites, bicentennial boosters estimate the 32 months of events planned to commemorate the War of 1812 could generate \$1 billion in tourism spending.

"It's very much about economic development and cultural heritage tourism," said Bill Pencek, executive director of the Maryland War of 1812 Bicentennial Commission.

The site of the wreck that could be the *Scorpion* lies a couple of miles upstream from Pig Point, also known as Bristol Landing, just past where Route 4 crosses the river. Since late July, underwater archaeologists from the U.S. Navy, the Maryland State Highway Administration and the Maryland Historical Trust have been working 12 hours a day, seven days a week, from a cluster of barges crammed with an excavator, a Port-o-Potty, a shipping container-cum-office and two large bins that filter water and sediment. Seven divers spend an hour or two at a time underwater with about a foot of visibility, carefully working through several yards of mud, silt and clay to what they believe is the hull of the vessel.

A couple of previously excavated artifacts indicate it might be the *Scorpion*: a grog cup with the initials C.W. that may have belonged to a cook who was transferred to the *Scorpion*, and a surgical kit that would likely have been on the ship. Researchers hope to find more definitive proof when they map the ship's dimensions.

The *Scorpion* was part of the Chesapeake Flotilla, which, under the command of Commodore Joshua Barney, battled the British in St. Leonard's Creek before retreating up the Patuxent, where the flotilla became trapped. Barney then destroyed his fleet to prevent the boats from falling into British hands. The British ultimately advanced on Washington, where they set fire to the president's mansion and the Capitol.

The wreck was first discovered by Donald Shomette, who has written several books about underwater archaeology in the

Patuxent, and by Ralph Eshelman in the late 1970s. It was excavated in 1980, but they reburied it because they lacked the funds to fully excavate and conserve the ship.

The current team led by Julie Schablitsky, chief archaeologist for the highway agency; Susan Langley, the state underwater archaeologist; and Robert Neyland, head of the Navy's Underwater Archaeology Branch in the Naval History and Heritage Command, faces similar constraints. Working with a budget of \$200,000 cobbled together from different sources, it only has money to do limited underwater excavation. More than a million more would be required to dam off the site and excavate the vessel under dry conditions.

If the state and federal researchers can find funds to turn the site into a dry dig, the excavation could become an attraction itself. Viewing platforms could be installed for tourists to see the ship as it emerges from the bottom of the Patuxent -- and for taxpayers to see their tax dollars at work.

The current team might also benefit from advances in conservation technology. The discovery of the wreck in 1980 contributed to the creation of the Maryland Archaeological Conservation Laboratory, which recently won a contract to conserve and reassemble the remains of a late 18th- or early 19th-century ship found at the construction site of the World Trade Center in New York.

If the vessel is confirmed to be the *Scorpion*, it could offer 21st-century tourists weary of present-day wars something other aspects of the War of 1812 can't: a heroic storyline. As the British approached Washington from the Chesapeake, Shomette says, "this fleet was the only thing in their way." (adapted from *Washington Post*)

Monocacy National Battlefield

National Park Service archeologists and interns at Monocacy National Battlefield recently completed the second full season of field excavations at the *L'Hermitage* Slave Village in Frederick, Maryland. Named for the tenant family who lived there during the Battle of Monocacy in July, 1864, the property was first occupied around 1794 by the Vincendières, a family of French planters who came to Frederick County from the colony of Saint-Domingue (Haiti). The Best Farm comprises the southern portion of the Vincendière's 748-acre plantation, *L'Hermitage*. By 1800, ninety enslaved individuals lived at *L'Hermitage*—the second largest slave population in Frederick County at the time. The Vincendières and their enslaved population occupied the plantation until 1827.

Limited survey and testing in 2003 and 2004 led to the discovery of what was believed to be the location of the slave village and an associated paling fence feature which likely enclosed garden plots or similar enclosed areas. Focused excavations began in 2010, during which an intensive shovel

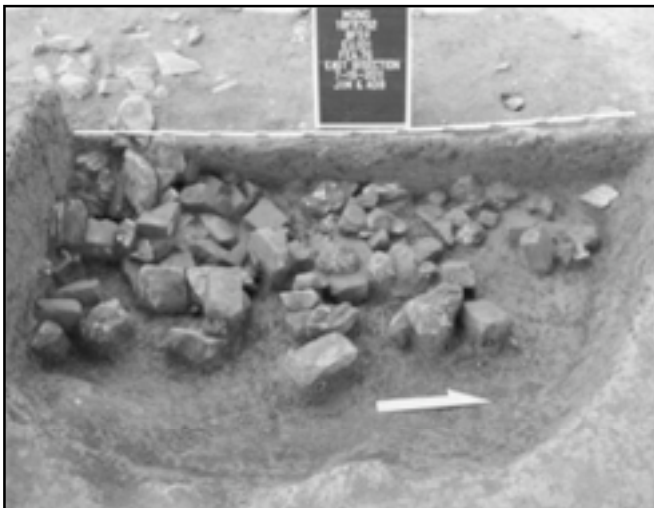


Monocacy National Battlefield archaeology staff and interns

test survey and subsequent block unit excavation revealed the stone chimney foundations of six individual dwelling houses, as well as stone piers at the corner of one structure termed Structure B. The structures measure approximately 20 feet wide by 34 feet long and were likely constructed of log. The 2011 field season focused on further refining the spatial layout of the slave village site. The periphery of Structure B was further explored, revealing an intermediate stone pier along the western wall. A large, circular 8' by 8' pit feature located in the northwest corner of Structure B was particularly illuminating; it appears that the northwest pier was pushed over into the large pit, which was likely excavated to dispose of architectural debris after the buildings were demolished around 1827. In the northern area of the site a large pit feature filled with domestic materials was defined, possibly representing an outdoor kitchen or activity area.



Howard University field school participant Jánea Reed and NPS intern Janie Monier expose subsoil



(Above) A large, circular 8' by 8' pit feature located in the northwest corner of Structure B, likely excavated to dispose of architectural debris



(Right) Intermediate stone pier located along the western side of Structure B

In addition, mechanical excavation was undertaken at an unidentified feature on the northern site boundary, resulting in the preliminary identification of what appears to be a lime kiln. Identification of this feature may indicate that the Vincendière family was utilizing slave labor in the production of lime.

The spatial layout of the site is one of its most interesting aspects. The slave village is situated in front of the primary building cluster on the back side of a slight slope, and each chimney foundation is exactly 66 feet apart. All of the structures and features are on the same axis of orientation as the extant buildings dating from the Vincendière occupation. The location and layout of the slave village site suggest that the Vincendières had a keen interest in keeping an eye on the enslaved population; they appear to have attempted to manipulate the landscape in an effort to reinforce their physical and psychological power. However, the location of garden plots, kitchens, and other domestic spaces to the rear of the dwellings may suggest a conscious effort on the part of the enslaved population to create some semblance of privacy.

This project was funded by the National Park Service's Cultural Resource Preservation Program and the Secretary of the Interior's Youth Intern Program. A total of seven undergraduate and graduate student interns from Howard University, the University of Maryland, Hood College, American University, and University of Maryland University College assisted with the project. In addition, a total of approximately 40 volunteers have contributed 1500 hours to the project so far, including ten Howard University students and faculty who participated in a two-week field school.

More information about the project can be found at <http://www.nps.gov/mono>

Charles County

Ceremony Marks Historic Discovery of Zekiah Fort. Archeologists and historians have sought to find the Zekiah fort for some eight decades. The search for the Zekiah Fort began in 1934, during the 300 year anniversary of the State of Maryland. William B. Marye began the search. Several archeologists searched as well, but turned up no trace of the fort.

The fort was established in 1680 by Gov. Charles Calvert, third Baron Baltimore (1637-1715) for the protection of the Piscataway Indians and other Maryland Indian tribes. The Piscataway Indians were being targeted by the Susquehannock and Seneca warriors.

This summer, after 80 years of searching and frustration and after three years of searching, the Zekiah Fort was found just east of Waldorf near Piney Branch. The team was assembled by Mike Sullivan, who also poured a lot of funding in to the

project, and led under St. Mary's College Professor and Archeological Project Leader Dr. Julia A. King.

"Colonial history is important not just to Maryland history but to national history," Dr. King said. "Zekiah Fort represents a complicated history. Artifacts we discovered were able to maintain identity and they were as evident as they were 300 years ago.

"History is everywhere we go in Southern Maryland, and this really is the next generation."

Three tribal chiefs of modern Piscataway tribes spoke, but none more passionately than Natalie Proctor, Chief of the Cedarville Band of Piscataway Indians.

"Piscataway people are extremely hard working," Proctor said. "We are blessed to work with the people of Southern Maryland... it is important that stereotypes be abolished! We still exist, we are still alive!"

Three Piscataway tribes worked with Dr. King and students, sharing their knowledge of Piscataway history and culture. Dennis C. Curry and Maureen Kavanagh, of the Maryland Historical Trust, also assisted in the effort by sharing information and reviewing the findings.

Several students worked in the heat and humidity during the summer months to make the discovery. Scott Strickland, St. Mary's College of Maryland alumni, worked from the beginning to help make the discovery. He was unable to attend the ceremony as he is attending classes at University of Southampton.

Elizabeth Albershardt, Skylar Bauer, Patricia Byers, Seth Farber, Alex Flick, Steven Gladu, Julianna Jackson, Mark Koppel, Amy Publicover and Scott Strickland from St. Mary's College of Maryland and Nicole Gatto, Sara Greenwell, Margaret Lucio from College of Southern Maryland and D. Brad Hatch from the University of Tennessee all worked with King and Sullivan, digging and moving dirt which ultimately led to the discovery. (adapted from Baynet.com)

Virginia

Reported by: David A. Brown

Colonial Williamsburg

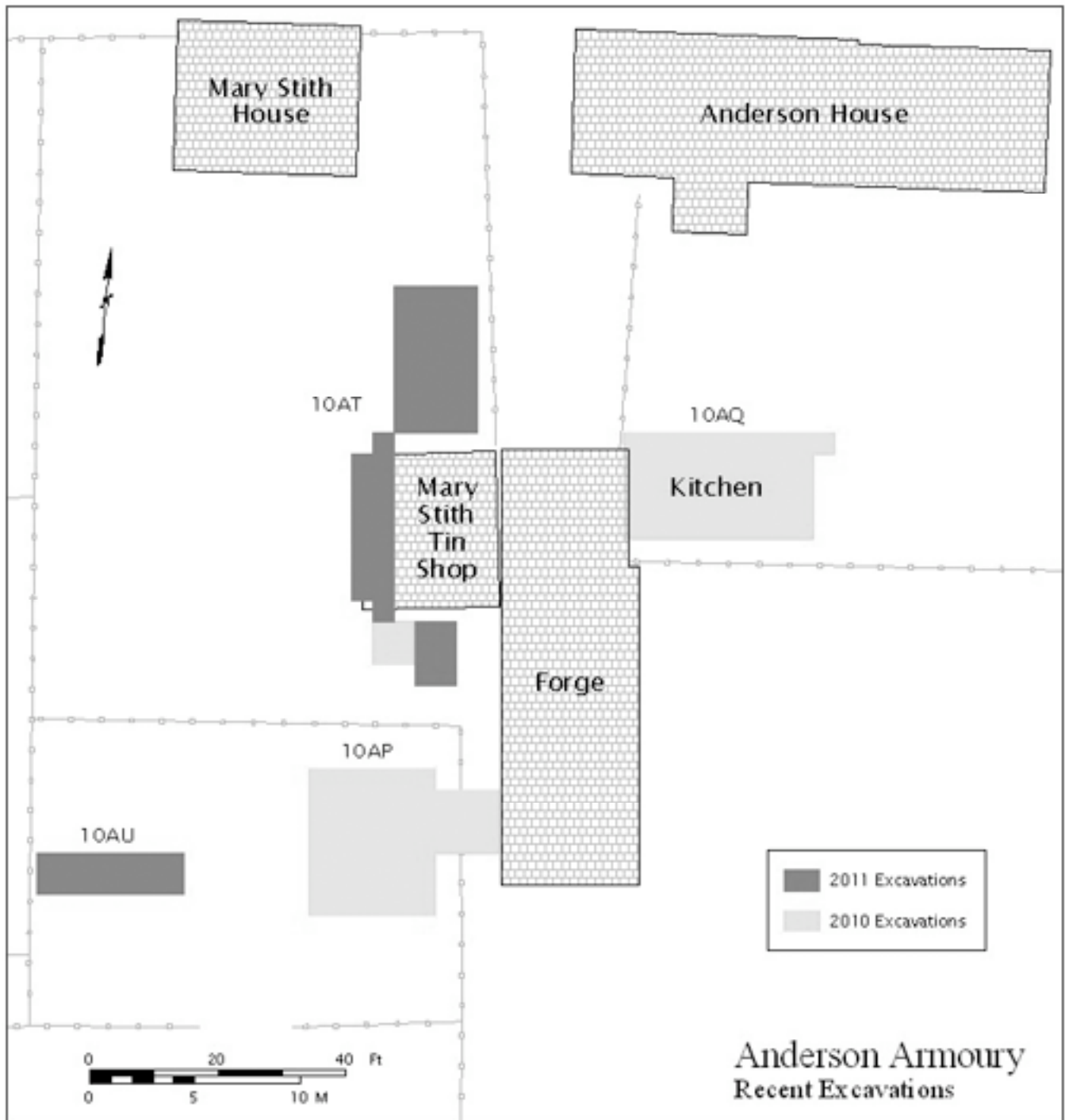
James Anderson's Public Armoury

In 1778 James Anderson, blacksmith, entrepreneur, and Public Armourer planned and built an operations center in the heart of Williamsburg that would supply vital materials and services to the American war effort. Consisting of six support buildings and workshops, and a workforce of over 40 men, the Armoury provided blacksmithing, tinsmithing, gunsmithing, as well as specialty copper tools and uniforms until

Lord Cornwallis invaded the town in 1780. Archaeology of the Armoury Site was begun in the 1930s, was continued in the 1970s and intermittently for another 35 years. Archaeological efforts were renewed in 2010 when Colonial Williamsburg announced plans to reconstruct James Anderson's Blacksmith Shop and Public Armoury as the bustling and varied operation it was during the Revolution. Last year, Colonial Williamsburg's Department of Architectural and Archaeological Research explored several areas on Colonial Lot 18, the site of the blacksmith forges,

kitchen and workshop. Those excavations had several goals: 1) locate and examine any features associated with the kitchen building that served the Anderson House when it was a tavern in the 1760s and 1770s and was used to prepare meals for the workers during the Armoury Period; 2) examine the foot-print of a previously uncovered workshop suspected to be the site of the tin smith, and 3) examine the southern part of the lot along Francis Street for landscape features.

The 2011 field season began on March 2nd and was centered



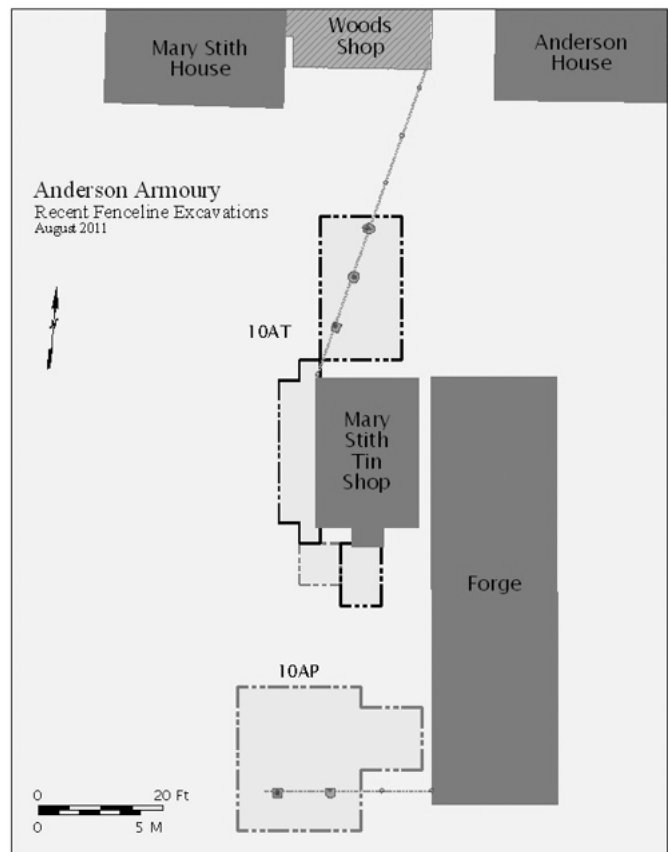
around excavations on Lot 17, westerly adjacent to Lot 18, and was designed to improve our understanding of the use of the so-called Mary Stith lot including, but not limited to, the Armoury period when at least one building on the lot was thought to have been incorporated into the Armoury Complex as a workshop. That building, reconstructed in 1940 as a generic shop, was referred to in Mary Stith's 1813 will as "the house in my yard called the tin shop" suggesting a hold-over of its function from the Public Armoury period just 33 years before. The Architecture Department uncovered the surviving brick foundations in the early 1930s, but left us with only two photographs and a scale drawing. The ownership of Lot 17 is unknown between 1740 and 1785 when Mary Stith acquired it from George Reid who had just purchased the lot from the College of William and Mary only a month before. The College had been given possession of properties abandoned by Loyalists who fled the colony at the outbreak of the revolution, so it can be assumed that in 1778, the lot was available for a publically financed project and was at least partially taken over by James Anderson.

A large portion of the Stith lot, particularly the northern part, was located in a ravine that traversed Duke of Gloucester Street from south to north. Bolstered by our success with the 2010 excavation of the ravine at the Coffeehouse, we decided to open a four by four meter excavation unit directly north of the Mary Stith Tin Shop, hoping its excavation could help us sort out the chronology and use of the property. Additionally, a two-meter wide apron on the west and south sides of the building were excavated in order to determine where openings on the original building were located and whether Armoury-period layers would hold clues to the activities going on inside the shop. The excavations would also provide topographical information to the NEH/IMLS-funded Virtual Williamsburg project that is digitally re-creating the buildings and landscape of Williamsburg on the eve of the American Revolution.

After the removal of several feet of clay deposited by Colonial Williamsburg in the 1930s in order to equalize the topography of the rear yards of Lots 17 and 18, and a mixture of early 20th-century fill and a layer of third-quarter 19th century debris resulting from the clean-up of the lots after a major conflagration in 1842, we found a substantial layer of primary forge deposition. The ~20 cm layer contained iron-heavy clinker, some scrap copper, bone button molds, and faunal material but comparatively few ceramics, bottle glass and clay pipe fragments. A preliminary analysis of the faunal remains from the Armoury layers by Staff Zooarchaeologist Joanne Bowen, along with corroborating historical documentation, suggest that Anderson was feeding his workers nutritious but plain meals using inexpensive cuts of meat such as stews and other one-pot dishes. The relative paucity of foodways-related ceramics further suggests that the workers were likely using non-ceramic vessels, perhaps made by the resident tin smith.

A set of diagonal post holes were discovered that linked the northwest corner of the Mary Stith Tin Shop with the southeast corner of a building known as the Woods Shop, a building that was archaeologically explored in the 1930s, but not reconstructed. The fence line, unusual in its diagonal orientation in a town of north-south, east-west fences, buildings, and roads, was also quite temporary and strongly suggests that the Mary Stith Tin Shop was physically included in the Armoury operation. The layer through which the post holes were originally dug was deposited just before the conversion of the area into the Public Armoury operation. While the fence was up, the layer of forge and kitchen debris described above was being rapidly and abundantly deposited east of the fence line. After the Armoury shut in 1780, the fence was removed as the post molds exhibited the characteristics of being wrenched out of the ground with the resulting hole filled with forge debris that had built up around the fence and fallen in the removal holes. Quite puzzling to us at first was the recovery of over 100 pieces of scrap tinned sheet iron from a post-removal hole 24 feet north of the tin shop. Subsequent excavations around the shop suggested a reason for that deposition that will be explained a bit further on.

Before he pressed it into service as part of the Public Armoury operation, James Anderson rented his house and kitchen on Lot 18 to various tenants who kept taverns there in the 1770s. Our ravine had been, just as it became in the Armoury Period



a convenient place to discard refuse. Layers of discarded rubbish from the tavern period differed greatly from the Armoury material especially in terms of the faunal remains. The tavern layers contained not only better cuts of meat from cows and pigs, but a variety of wild species and fish not prevalent in the Armoury fare. Abundant, too, were ceramics, bottle glass, leaded glass, and pipe stems that were comparatively unrepresented in the Armoury layers. The one common faunal species well represented in both groups was oyster, a popular fare that was both inexpensive and abundant throughout the 18th century. In addition, trash from documented businesses in the area including a millinery shop, an apothecary and a wig maker were recovered from the ravine layers. A layer nearly six feet into the ravine contained kitchen material from an unknown source deposited in the late first quarter or early second quarter of the 18th century. Among the thousands of bone fragments were beads, cowry shells, colonoware, and even a whole articulated chicken. Analysis of this material has begun and is expected to be completed within the next year.

As mentioned earlier, a two-meter apron was excavated on the west and southern sides of the reconstructed Mary Stith Tin Shop in order to help determine the function of the building, its construction date, and where any doors or windows may have been located. The building was constructed on the slope of the western side of the ravine and although its construction date was unknown, it was assumed that it had stood until the 1842 fire that destroyed most of the block. Archaeology of the western, ravine-side elevation uncovered several significant layers and features: a destruction layer dating roughly to the mid-19th century, postholes, debris and a porch/stairs drip line suggesting steps approaching a central entrance, evidence that the porch posts were removed in the late 18th century, and an earlier, undatable layer of nearly sterile fill that was used to level a surface for building, compensating for the natural slope of the ravine. Fewer artifacts than expected were recovered from the excavation of the west side of the tin shop, probably because it acted as a barrier for the disposal of refuse from the east. Unfortunately, excavations south of the building were compromised by the 1930s archaeology, reconstruction of the end chimney, utilities and other modern disturbances.

One of our major goals this season was to learn more about the physical characteristics and activities associated with the so-called Mary Stith Tin Shop. Our findings would help determine whether the building would be included in the interpretation of the Armoury complex and if so, in what way. Although the excavations are, as of the end of September, still in progress and much analysis has yet to be done, we feel that we can say with as much degree of certainty as archaeologists can muster, that the building known as the Mary Stith Tin Shop was incorporated into the Public Armoury as a shop. Was it used as a tin smithing shop? Perhaps, even though only

four scraps of tinned sheet iron were recovered from a layer west of the building. Our current interpretation (but subject to change after the analysis is complete) suggests that Mr. Anderson wedged his blacksmith forges in between two existing buildings in order to incorporate the existing shop on Lot 17 into the forge structure. For security reasons, Anderson blocked off the west door to the tin shop and cut another through on the east side in order to join the forges. The diagonal fence provided security by blocking off access to Lot 18 from Lot 17 and explains why so little tinned sheet iron was found west of the building, but so much was found in a post mold, the fill of which could have originated from the tin shop and been mixed with other forge debris before being deposited in the ravine.

As mentioned earlier, analyses of the artifacts, faunal material, soil samples, and stratigraphic relationships, while ongoing during the excavation, has not been completed. We look forward to presenting a fuller picture of the landscape, foodways, environmental changes through time, and community relationships in this part of Williamsburg.

Historic Excavations on the Old Colchester Park and Preserve

For the past year, the Fairfax County Park Authority has been conducting archaeological investigations on the Old Colchester Park and Preserve, located in the southeastern portion of the county. Both historic and prehistoric resources are being evaluated for significance. The park contains evidence of at least 8,000 years of human use spanning the Early Archaic period of prehistory through modern times. Several historic sites are being visited including architectural and domestic remains associated with a cemetery and Colchester, a historic Virginia tobacco port town.

Several features associated with Colchester's town period have been identified. Work within a trench feature was recently completed. The trench contained a very red-hued feature matrix with an interior rock-filled trench. The orientation of this feature runs askew to the town grid, possibly indicating it served a function specific to a town lot and resident. Artifacts recovered from this feature strongly indicate a colonial period of fill. Currently being excavated is a portion of a stone masonry-lined cellar feature. Artifacts recovered from this feature indicate an early-nineteenth century period of destruction. The stonework constitutes one of three similar foundations identified within the park property, along historic Old Colchester Road. Additionally, the historic team is delineating the extent of a linear stone masonry feature constructed of blue slate. The feature may reflect a lot boundary. If so, it would contribute significantly to our understanding of town organization.

We intend to continue investigations on the town site, although on a more limited basis. The main focus of historic



Partially Excavated Cellar Feature

investigations is shifting to an eighteenth through early-nineteenth century site located outside town boundaries. Although not an aspect of the archaeological investigation, this site contains a cemetery with one marked headstone that dates to the mid-eighteenth century. Prior, identification-level investigation indicates a strong probability for intact cultural features indicative of a structure within the site. Research questions for this site focus on whether it represents a residence and associated family burial plot or a church and cemetery.

Archaeological investigations on the Old Colchester Park and Preserve rely on volunteer assistance. We have received a tremendous outpouring from the Archaeological Society of Virginia, Northern Virginia Chapter, as well as unaffiliated members of the interested public. However, we can always use more hands. If you are interested in historic or prehistoric field or lab work contact us at CART.Volunteers@gmail.com; everyone can chart our progress on our blog, <http://www.cartarchaeology.blogspot.com/>.

Fairfield Foundation Update

The summer of 2011 was a constant balancing act between our traditional work with interns, fellows, and volunteers at Fairfield Plantation and the restoration work on our future home: the 1931 Edge Hill Service Station. First: the archaeology. Volunteer efforts focused on cleaning, mapping, and

backfilling many plowzone sampling units already begun, and then opening slightly larger areas to explore previous discoveries in greater detail. This included a brick-bat foundation located in 2010 which is in close proximity to a scatter of 17th-century artifacts east of the manor house. While the date of the foundation is not yet determined, it adds complexity to our understanding of this portion of the site on the opposite side of the manor house from the work yard but near the road leading to the formal front yard of the house. Students uncovered additional portions of the foundation, but the nature of this building is still undefined.

Volunteers also assisted with three student-directed projects. Monroe Scholar Colleen Betti of the College of William and Mary focused her summer project on an in-depth study of a five-foot-square test unit excavated within the kitchen midden. While heavily impacted by plowing, and without the clear integrity displayed in the historic midden at Mount Vernon currently under study by Eleanor Breen, Betti's hope is to use her initial analysis of the great variety of artifact types and frequencies to better understand how the midden was used over time and position it within the chronology we are establishing for the plantation landscape. Monroe Scholar Tracy Jenkins, also of the College of William and Mary, returned to sample the large feature complex he studied last summer. After excavating a handful of additional test units, he selected an approximately two-and-a-half by five-foot section of the deeply stratified feature deposit. His initial findings suggest the filling of this feature occurred near the end of the 18th century and is likely associated with enslaved Africans. The interesting location of this probable domestic complex, situated far enough from the manor house to be considered a separate quarter, but still within the plantation's core, heightens the significance of this study as few like it have been excavated. A report on the findings will form the basis for Jenkins' senior honors research.

Our annual Fairfield Foundation Fellowship in Plantation Studies was awarded to Elizabeth Bucklen of Mary Washington University. Liz focused her research on the ice house at Fairfield, examining its basic architecture and placement in the plantation landscape. Her work builds on prior research by Molly Weisblatt and delves deeper into the construction date, operation, and eventual demise of this often overlooked, but highly significant, plantation outbuilding. The hard work of Liz, Tracy, and Colleen, and the continued support of experienced volunteers and certification students from the Middle Peninsula Chapter of the Archeological Society of Virginia, made the summer unforgettable for participants in our outreach programs with the Mathews County YMCA, Rappahannock Community College's Institute for Life Long Learning, and the National Institute for American History and Democracy (NIAHD) of the College of William and Mary and the Colonial Williamsburg Foundation.

This summer also marked our first foray into preservation workshops. Alongside Adventures in Preservation, we hosted a week-long workshop focusing on the restoration of early 20th-century metal windows. Using our future home as the guinea pig for this project, we received the same enthusiastic support and interest that we've seen in the field for the last ten years. While many of our volunteers are archaeologists, we hope that this type of cross-training activity will provide those of us with dual interests to participate in hands-on activities that benefit preservation projects of all types. Our 2012 project will focus on plastering, teaching participants the finer points of applying concrete plaster in an early modern building. This should provide a welcome contrast to the lime mortar workshops that focus on 18th- and 19th-century buildings.

Current and Recent Projects at the College of William and Mary Center for Archaeological Research

Compiled by Stephanie Bergman

The William and Mary Center for Archaeological Research (WMCAR) staff have been involved in a number of interesting projects over the course of the past year. Especially significant is the recent discovery of otherwise undocumented brick building foundations that were hidden for centuries beneath William and Mary's historic campus (Figure 1). It is very likely that this structure was an outbuilding or dependency of the Wren Building, the oldest college building in the United States, constructed between 1695 and 1700. The newly discovered foundations represent a substantial brick building that dates to the early to mid-eighteenth century, and likely functioned as some kind of service building or perhaps housing associated with the enslaved individuals who lived and worked at the College (Figure 1). The foundations, extending 20 feet east-west by more than 16 feet north-south, were discovered during archaeological testing in advance of proposed brick sidewalk repairs (which have now been postponed indefinitely in the interest of avoiding effects on the significant archaeological resources).

Despite a long history of building, destruction, reconstruction, renovation, utility work, landscaping, and multiple episodes of prior archaeological investigation, all of which have contributed to a very complicated history of site formation in this portion of the campus, the archaeological integrity and research potential of the locus where the foundations were discovered are quite remarkable. The foundations are relatively well-preserved and are 1.5 courses wide substantially three brick-courses wide, suggesting that the building was relatively substantial and perhaps multi-storied. Given its location in close proximity to and alignment with the Wren Building, It is speculated that this foundation served as a function-specific building, such as a kitchen, laundry, and/or possibly quarters. The intentionally limited archaeological testing (intended to gather diagnostic information on the nature, time period of use, integrity, and research potential of the resources) resulted in the recovery of hundreds of artifacts and documentation of the precise location of the foundations and approximate extent of the preserved remains. Subsequently, the test excavations were back-filled to protect the archaeological resources. The discovery has generated considerable interest among College researchers, scholars, and the wider community, particularly given its potential relevance to the College's Lemon Project. The Lemon Project was initiated by the Board of Visitors in 2009 to explore the College's relationship with slavery through an interdisciplinary program of focused research and outreach. By virtue of this institutional focus and interest, it is possible that more comprehensive archaeological investigations can be planned at the locus of the brick foundations with the goal of documenting and analyzing the material remains of otherwise poorly understood yet fundamental activities and occupation on the College campus by servants and enslaved individuals who worked in support of the academic institution during the colonial period and until Emancipation.

Archaeological evaluation was also completed at the Anthony Baecher Earthenware pottery site (44FK0550) and home site



Figure 1. WMCAR field technicians Cheryl Frankum (left) and Tom Young take measurements at the site of colonial-era brick foundations recently discovered on the historic campus of the College of William & Mary, as Edward Chappell, Roberts Director of Architectural and Archaeological Research at the Colonial Williamsburg Foundation sketches other elements of the discovery in the background.

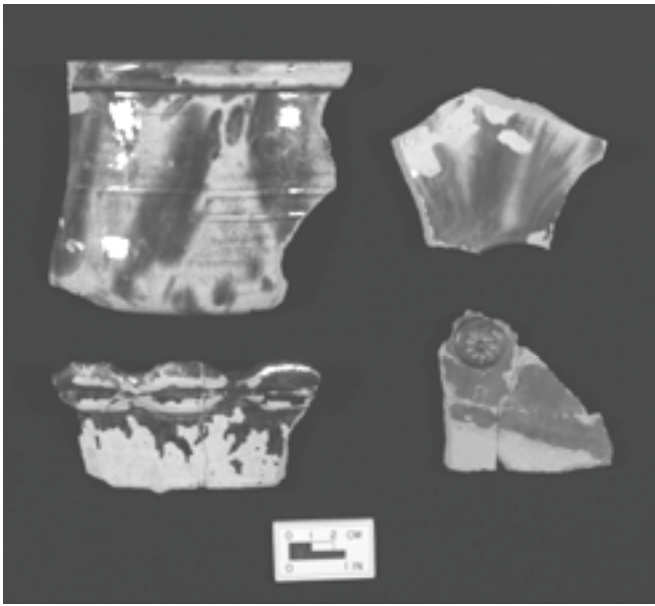


Figure 2. *Representative ceramic sherds recovered from the Anthony Baecher Earthenware site (44FK0550), Frederick County, Virginia during an archaeological evaluation conducted with the support of the Virginia Department of Transportation in association with the proposed Route 655 improvement project.*

(44FK0678), in Frederick County, Virginia, with the support of the Virginia Department of Transportation and in association with proposed improvements to Route 655. These sites represent the remains of a farmstead associated historically with Anthony Becher, the proprietor of an earthenware pottery (Figure 2). The site consists of the remains of the stone foundation of a dwelling, a stone-lined well, the ruinous remains of a barn, an outhouse, a semi-subterranean stone-foundation structure, a rectangular concrete pad adjacent to the dwelling, and postholes that may represent an enclosure to the north of the dwelling. The concentration of brick in the center of the dwelling suggests that the house had a central chimney, an architectural design that is common to German-American dwellings in the Shenandoah Valley. In addition to site integrity, the richness of the artifact assemblage suggests that questions beyond the occupational level may be addressed regarding nineteenth-century farmstead site structure, access to markets, family life, consumer choices, adaptive strategies, and industrial activities at a domestic farmstead complex during the Reconstruction and Growth era in the Valley of Virginia.

The WMCAR completed intensive historical research and cartographic analysis of the City Point waterfront of Hopewell, Virginia. WMCAR conducted these investigations under sponsorship of the City of Hopewell. This intensive study of archival records focused on the historical development of onshore port facilities and wharves, and the potential for associated, significant archaeological resources that may

be extant along the waterfront. These efforts are intended to offer the City, and other interested parties important management planning information with respect to archaeological sensitivity and research potential not limited to but especially focused on Civil War resources associated with City Point, given interest in the Civil War Sesquicentennial and potential commemorative events and activities. The research especially focused on the period of most intense use as a Union Army supply depot and headquarters for the siege of Petersburg in 1864-65. Geographic Information System (GIS) analysis of selected nineteenth-century maps was augmented with historical information from written descriptions, photographs, and artistic depictions to geo-reference historic buildings, wharves, and topographic features to the modern landscape.

DATA Investigations Update

DATA Investigations spent much of the summer wrapping up old projects and starting a few new ones – some quite unexpectedly. Our firm’s continued efforts to highlight Criterion D (AKA – Archaeology) on nominations to the state and federal registers of historic places resulted in sustained outreach to public agencies, civic organizations, and private individuals in Gloucester County and beyond. In addition, we are continuing our work to analyze and document unreported excavations from the last three decades on the Middle Peninsula. As these projects are completed, we find an increasing demand to publicize, discuss, and expand our outreach programs alongside the cultural resource management services we offer. While the current economy continues to slump, the demand for assistance with managing our historic resources is certainly not slowing down.

The continued extraction of architectural debris from Menokin, the collapsed 1769 home of Francis Lightfoot Lee, signer of the Declaration of Independence, was wrapped up this spring as the Menokin Foundation shifts gears in preparation for the next stage in reconstructing this monumental building. Excavations continued on the southeast room and the immediate exterior, but also included limited work on the north façade. The final extraction will likely coincide with the initial stage of stabilizing the remaining building fabric, focusing on the interior of the southeast room and along the exterior of the north façade.

Our work in Gloucester and beyond also involved frequent consultation with Joanna Wilson, Archaeology Easement Specialist at the Department of Historic Resources. With Joanna’s guidance, we assisted in testing, evaluating, and monitoring easement properties including Burgh Westra, the Gloucester Women’s Club, Rosewell, and Menokin. In the first two cases, our work was some of the first archaeology on these properties and helped redirect potential impacts while saving and recovering significant archaeological data. In the latter two, our work built on prior research efforts and involved the processing and synthesis of older excavations

with new, focused research. We are encouraged by the increasing number of our historic sites protected by easements and are delighted to see progress in the preservation of historic buildings and landscapes in Gloucester, including Fairfield Plantation, the Edge Hill Service Station, and Werowocomoco.

Monitoring also required significant time and energy during the spring and summer. Completing the excavations and monitoring at the Virginia Institute for Marine Science (VIMS) for their construction of a large storage building, we returned to monitor the demolition of numerous residential buildings and support structures. Highly significant resources of 18th-century Gloucester Town, various military earthworks and occupations, and Virginia Indian settlements are beneath these buildings and the entire VIMS campus, so it is very important to prevent unnecessary impacts to these resources. Much of the demolition has already been completed, and no archaeological impacts have been observed.

The roadway improvement project surrounding the Gloucester Courthouse Green has been a different story. The 18th- and 19th-century courthouse complex is situated above an earlier set of buildings, both public and private, that we know very little about. Two surviving plats, dated 1754 and 1774, illustrate numerous buildings that make up distinctly different, but linked, landscapes which included courthouses, jails, taverns, private residences, warehouses, and a “club house.” Three foundations were discovered during monitoring activities in July, and construction work continues to reveal associated features. One foundation, constructed largely from compass or “well” bricks, extended beneath the standing 1766 courthouse. A second building was found beneath the 1933 brick wall constructed by the CCC, and also likely predates the adjacent courthouse. While decades of roadwork significantly truncated the foundation, the cellar entrance survived along with evidence for a brick drain. A third foundation was discovered in a narrow pipe trench and utility hole, revealing a cellar that extended at least four feet below grade. This resource matched well with the discovery of a “30 foot wide and 6 foot deep cellar” reported in the Gloucester Gazette in the same location in the 1940s. These features each included significant amounts of mid-18th-century dark green wine bottle glass, wrought nails, tobacco pipe stems, and domestic debris in quantities and varieties that suggest at least one of the buildings was a tavern. Along with excavations undertaken by Dave Hazzard and Doug Sanford in the 1970s, these discoveries will greatly improve our understanding of the courthouse landscape and its development through the 18th century. In most cases, the current construction has minimally impacted the resources and planners have re-engineered aspects of the project to avoid further adverse effects on the resources. By involving the public whenever possible, the project has resulted in renewed interest in the interpretation of the courthouse green and the potential for future dis-

play, research, and, perhaps, excavations. It may also spur county officials and private property owners to better protect their archaeological resources in the vicinity.

The Institute of Maritime History

During 2011 the Institute of Maritime History conducted several underwater reconnaissance and site assessment projects in Virginia for the State Historic Preservation Officer, for Stafford County, VA, and for the U.S. Marine Corps Base, Quantico, VA.

1. Mount Vernon

IMH and the Lighthouse Archaeological Maritime Program of the St. Augustine Lighthouse & Museum (Florida) are conducting the first known underwater survey at Mount Vernon. Fieldwork commenced in April 2010, resumed in February 2011, continued in August 2011, and will continue in 2012. The search area covers 880 acres with 280 miles of search lanes. Four definite shipwrecks and several possible wrecks have been found so far. Three of the sites are in Maryland waters, and one in Virginia. Remote sensing has utilized a magnetometer, handheld metal detector, and two types of sidescan sonar.

One target, not yet found, is the miniature full-rigged ship *Federalist* that was given to General Washington on June 9, 1788, and sank off Mount Vernon in a storm on July 24 of that year.



IMH vessel Roper at Mount Vernon.

2. Virginia rivers

During 2011 IMH conducted a reconnaissance of six rivers for the Virginia Department of Historic Resources. The rivers are tributaries of the lower Potomac River. Search lanes totaling 380 miles covered 3,840 acres. Four wrecks and several possible ballast dump sites were found, mapped, and reported to the state.

3. Aquia, Virginia

IMH and the Maryland Historical Trust surveyed the submerged portions of the area where an amphibious battle was

fought from May 29 to June 1, 1861, between Confederate artillery positions ashore and U.S. Navy warships in the Potomac River. Fieldwork included remote sensing by sidescan and magnetometer, and mapping more than 100 pilings from a railroad pier in collaboration with John Milner Associates. This project was funded by a grant from the National Park Service, American Battlefield Protection Program.

4. Quantico, Virginia

Fieldwork continued during 2011 for the U.S. Marine Corps Base, Quantico, to map a steamship wreck (believed to be C.S.S. City of Richmond, ex- S.S. George Page, scuttled in March 1862) and to search for at least two schooners reported to have been burned in November 1861 and March 1862. In May 2011 the Advisory Council on Historic Preservation graciously awarded the Marine Corps Base and IMH its "Chairman's Award for Achievement in Historic Preservation" for work accomplished to date. Work will continue in late 2011.

For more information visit www.maritimehistory.org or email david.howe@maritimehistory.org.

NEW PUBLICATIONS

Jordan's Point, Virginia

Archaeology in Perspective, Prehistoric to Modern Times

Martha W. McCartney

144 pages, 6" x 9"

100 color and b&w illustrations

Paper 978-0-615-45540-2 * \$14.95

You can see a link to the book on the University of Virginia Press website, as UVaP is distributing the book, which should be available in latter October. (We are now wrapping up and getting it to a printer.)

Here's the blurb about it from the UVaP website:

Jordan's Point, a nearly triangular promontory in the James River, is situated in Prince George County, just east of the confluence of the James and Appomattox Rivers. In 1607, when the first European colonists saw it, the area was home to natives they would call the Weyanoke. By 1660, Jordan's Point had come into the possession of the Blands, one of England's most important mercantile families; they gradually developed Jordan's Point into a family seat and working plantation, which they retained until after the Civil War. Featuring more than one hundred photos and illustrations, most in color, and intended for a general reader, this book tells the story that spans thousands of years, through the cultural features that archaeologists have unearthed at Jordan's Point.

Rocks, Riddles and Mysteries: Folk Art, Inscriptions and Other Stories in Stone

Edward J. Lenik

218 pages, 6" x 9"

124 illustrations

Paper 978-0-9830827-1-2 * \$18.95

American History Press is pleased to announce the publication of "Rocks, Riddles and Mysteries: Folk Art, Inscriptions and Other Stories in Stone" by well-known New Jersey archaeologist and author Edward J. Lenik.

Widely recognized for his expertise in northeastern Native American rock art, the author has encountered many strange and curious historical rock and stone carvings and structures during the course of his travels and research, some of which may be regarded as Native American, but the majority of which by his reckoning are "white guy" art. This book describes details of those sites and objects, and the fascinating stories behind their creation.

Puzzling, captivating, and at times bewildering, these historical curiosities include faces, animals, designs, patterns and scenes carved on rocks through New England, New York, New Jersey and Pennsylvania. The author has personally probed and researched each site in some detail, learning when it was first noticed and what the local people had to say about why it was there and who carved or painted it.

Tourist attractions? Boy Scout art? Idle play among quarry workers? Archaeological fraud? Hebrew inscriptions? Outsider art? Norse runes? You can decide since a handy "See For Yourself" section invites you to visit the sites that are publicly accessible so that you may draw your own conclusions.

Designed to be used in the field, or equally enjoyable as an armchair read, this guide will transport the reader on an adventure of discovery, visiting curious places, looking at mysterious rocks and hearing the stories they have to tell.

"Rocks, Riddles and Mysteries" is available from:

- www.Americanhistorypress.com, or
- By calling American History Press at 1-888-521-1789, or
- Direct from the author, or
- www.Amazon.com, or
- www.Barnesandnoble.com, or
- Ordered from your local neighborhood bookstore

2011 CANADIAN MEMBERSHIP LIST Since July 2011 Newsletter

Bazley, Sue, 24 Jenkins Street, Kingston, Ontario K7K 1N3, Canada, sue@bazely.ca
 Benn, Carl, 254 Indian Road, Toronto, Ontario M6R 2X2, Canada, cbenn@ryerson.ca
 Bernard, Jacynthe, 2204 rue Tunis, Québec, Québec G1C 6Z8, Canada, jacynthe.bernard@gmail.com
 Cottreau-Robins, Katie, 2529 Elm Street, Halifax, Nova Scotia B3L 2Y5, Canada, ccottreau-robins@dal.ca
 Dussault, Frédéric 1591, rue du Grand-Bourg, , Québec, Québec G3J-1L1, Canada, dussault.fred@gmail.com
 Faucher, Anne-Marie, 650 rue Francis-Byrne, app. 115, Québec, Québec G1H-7N9, Canada, anne-marie.faucherl.1@ulaval.ca
 Garden, Mary-Cate, 17 Kintyre Avenue, Toronto, Ontario M4M 1M2, Canada, mrgarden@btinternet.com
 Grenville, John, 24 Jenkins Street, Kingston, Ontario K7K 1N3, Canada, sue@bazley.ca
 Miller, Aaron, P.O. Box 223, Charlemont, Massachusetts 01339, USA, taylors_fort@yahoo.com
 Niven, Laird, 7 Thompson Street, Dartmouth, Nova Scotia B2Y 2X8, Canada, laird.niven@ns.sympatico.ca
 Parent, Caroline, 221, rue St-Joseph, apt. B, Lévis, Québec G6V 1E2, Canada, parc81@hotmail.com
 Parks Canada Resource Centre OSC (Ottawa), Parks Canada Ontario Service Centre, 111 Water Street East, Cornwall, Ontario K6H-6S3, Canada
 Parks Canada Resource Centre OSC, Parks Canada Ontario Service Centre, 111 Water Street East, Cornwall, Ontario K6H-6S3, Canada
 Ratcliffe, John, 235 Castlegarth Crescent, Nepean, Ontario K2J 5N6, Canada, jrcliffmail@yahoo.ca
 Royer, Martin, 375 Rue Laviolette, Québec, Québec G1K 1T4, Canada, royermartin@sympatico.ca
 T.J. Bata Library, Serials Department, Trent University, Box 4800, Peterborough, Ontario K9J-7B8, Canada, jwales@trentu.ca

Application for Membership

The Council for Northeast Historical Archaeology

Name/Nom: _____
 Adress/Adresse: _____
 Telephone: _____ EMail: _____

Membership covers the calendar year January 1 to December 31, 2011.

Please renew early to reduce our costs.

Mail to:

Sara Mascia
 Treasurer, CNEHA
 16 Colby Lane
 Briarcliff Manor, NY 10510

or poster a l/adresse ci-dessous

Joseph Last
 PO Box 1961
 Cornwall, Ontario
 Canada K6H6N7

Rates	US \$	CDN \$
___ Individual/ordinaire	35.00	35.00
___ Student/etudiant	20.00	20.00
___ Joint*/conjoint*	40.00	40.00
___ Fellow**/Associe**	50.00	50.00
___ Life/a vie	600.00	600.00
___ Business/enterprise	55.00	55.00
___ Non-Profit Organization/ organisme sans but lucraif	45.00	45.00

*For two people at the same mailing address. / Pour deux personnes de la meme adresse postale. Elles ne recoivent qu'un exemplaire des publications.

**For those who feel a primary commitment to Northeast Historical Archaeology and wish to support the Council's activities at a higher voluntary membership rate. / Pour ceux qui s'interessaient a l'archeologie historique du Nord-est americain et qui veulent aider a soutenir l'action du Conseil en versant une cotisation plus elevee.